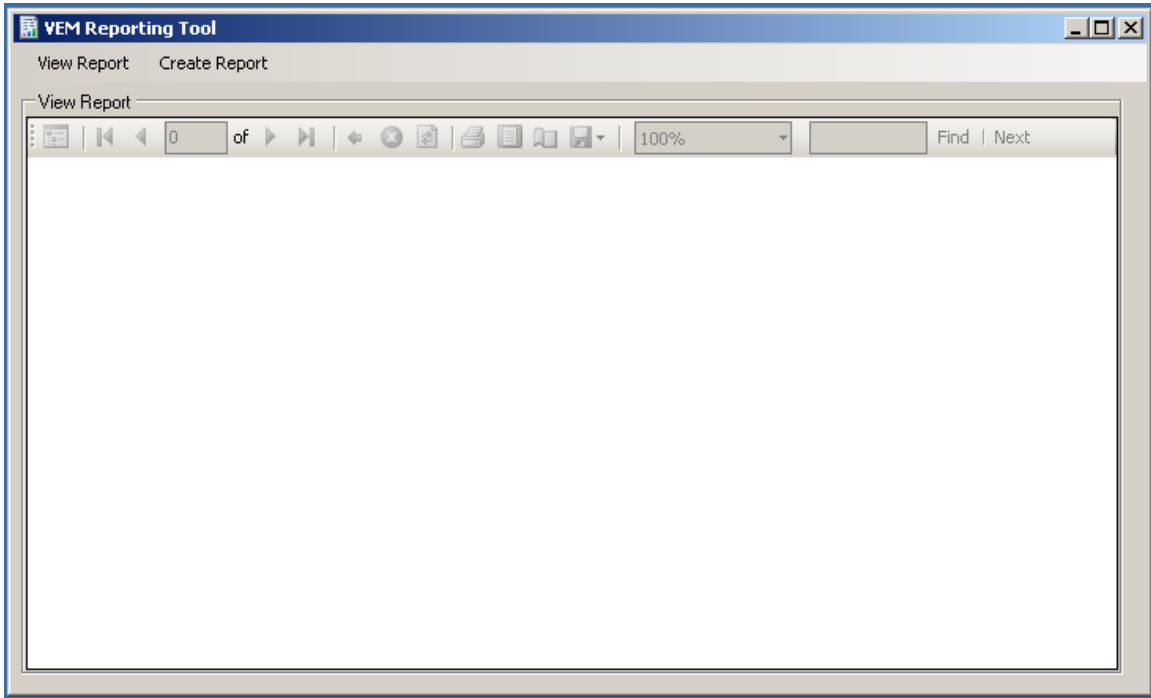
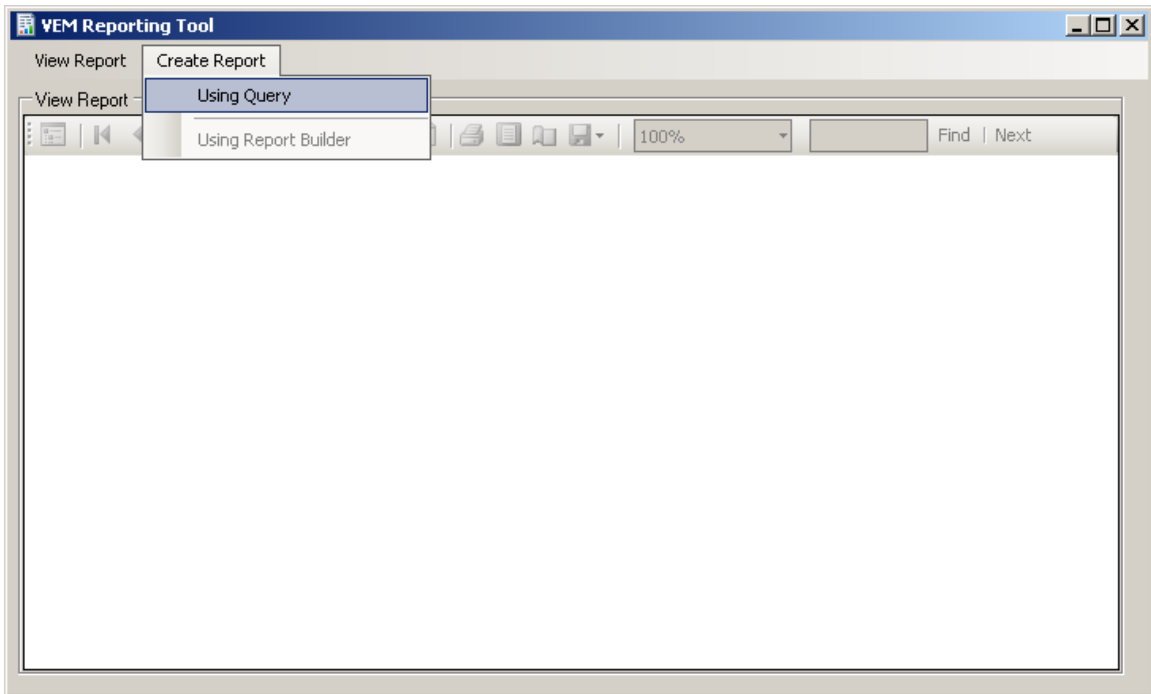
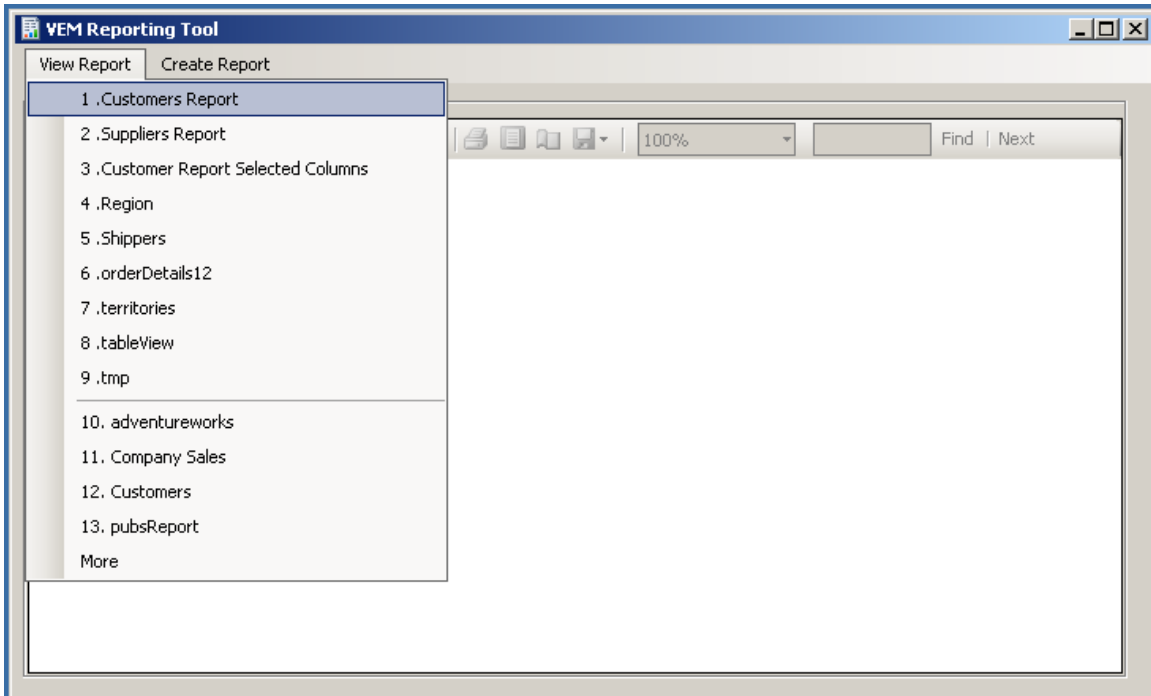
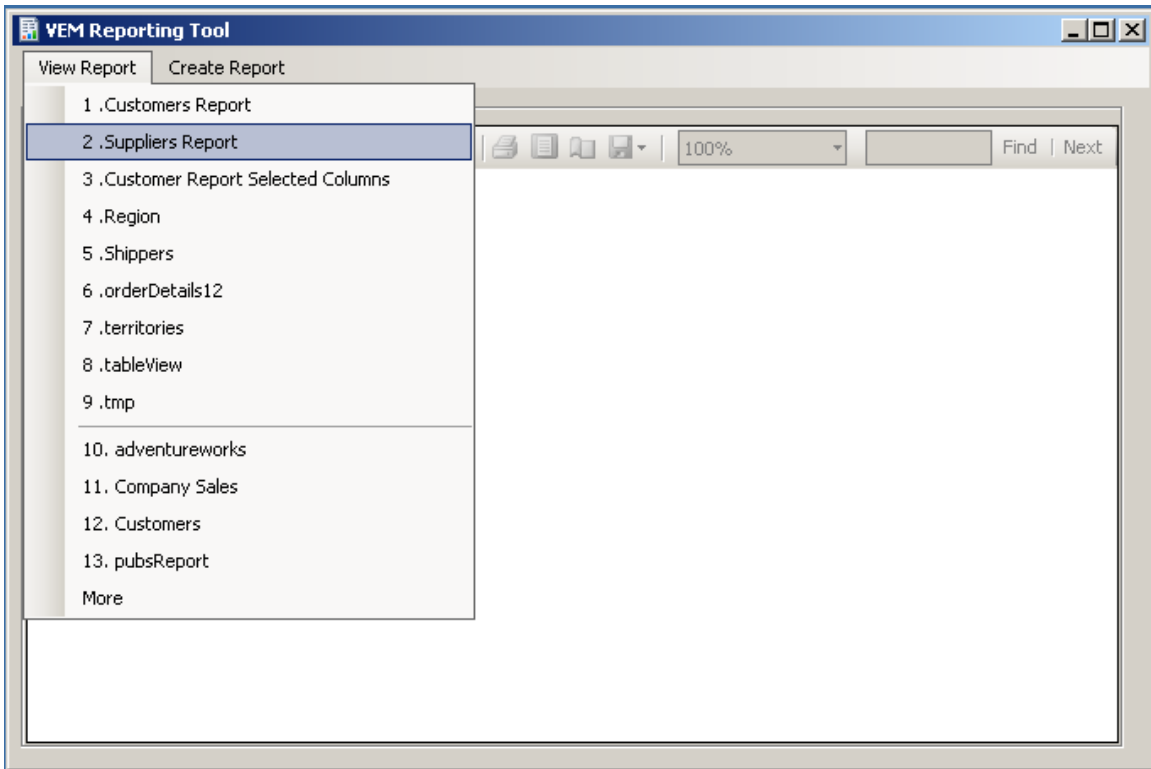


Visual Enterprise Manager Reporting Tool

Date: May 17, 2007

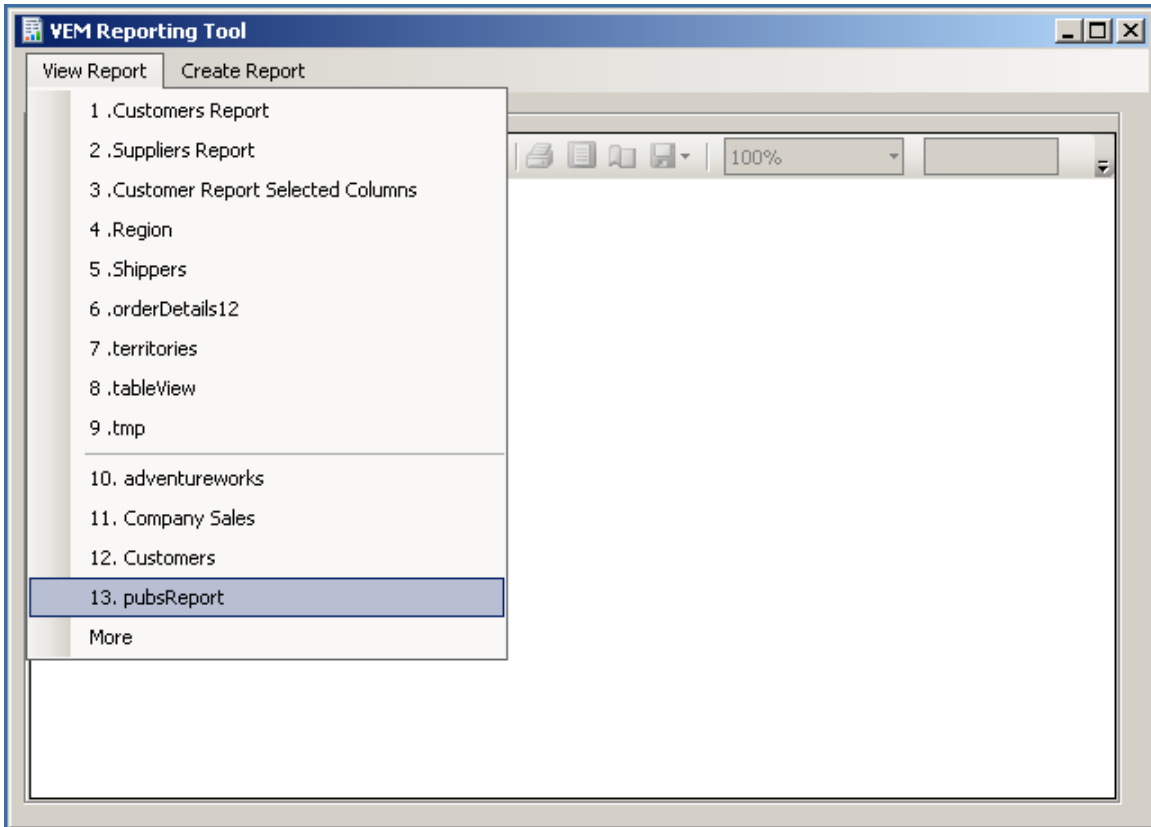






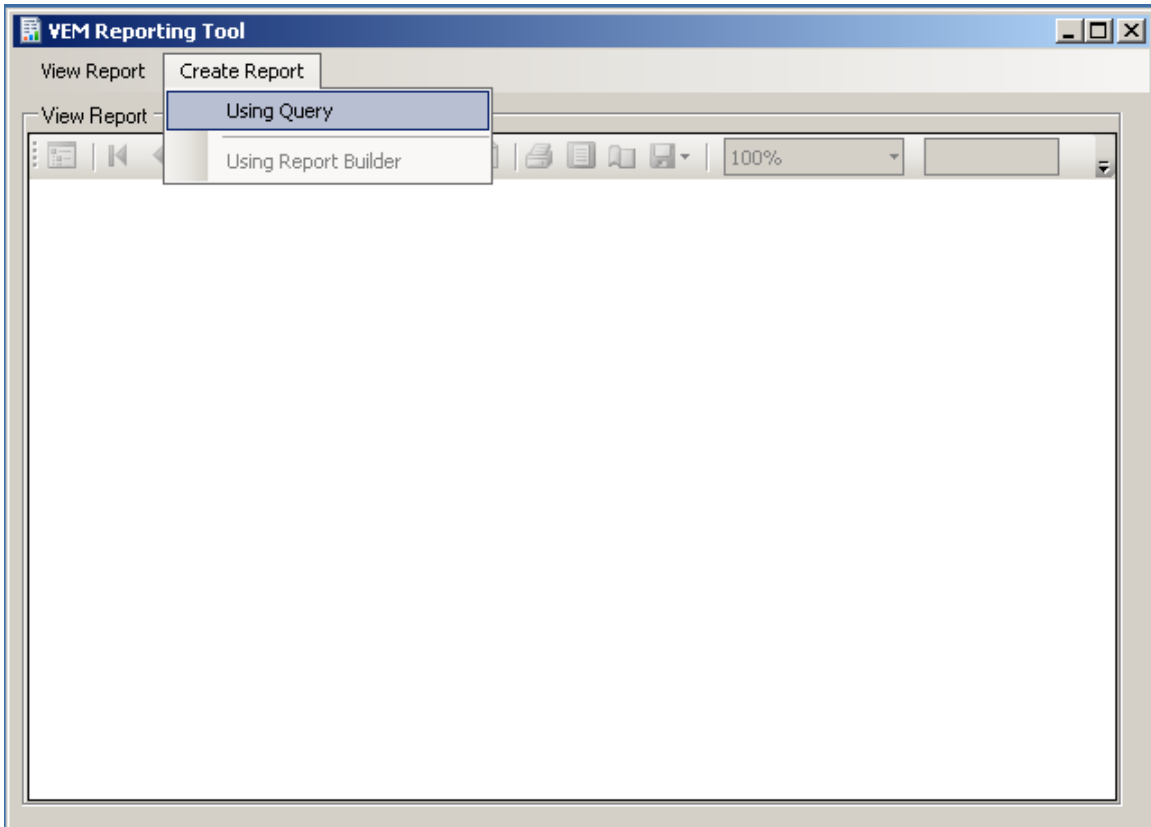
The screenshot shows the 'VEM Reporting Tool' window displaying a report. The report is titled 'View Report' and shows a table with 10 rows of data. The table has four columns: SNO, SupplierID, CompanyName, and Contact. The data is as follows:

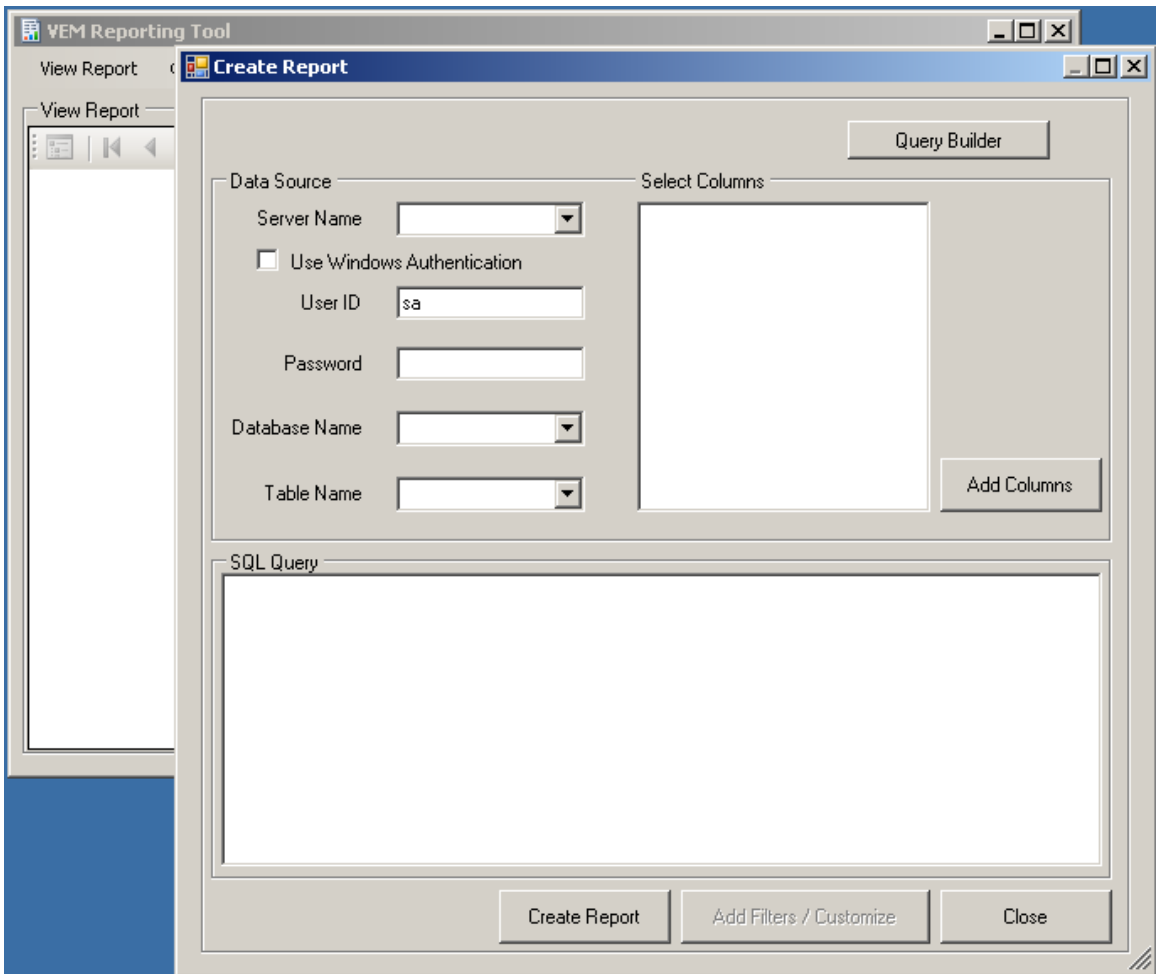
SNO	SupplierID	CompanyName	Contact
1	1	Exotic Liquids	Charlotte
2	2	New Orleans Cajun Delights	Shelley E
3	3	Grandma Kelly's Homestead	Regina M
4	4	Tokyo Traders	Yoshi Na
5	5	Cooperativa de Quesos 'Las Cabras'	Antonio c
6	6	Mayumi's	Mayumi
7	7	Pavlova, Ltd.	Ian Devlin
8	8	Specialty Biscuits, Ltd.	Peter Wi
9	9	PB Knäckebröd AB	Lars Pet
10	10	Refrescos Americanas LTDA	Carlos D

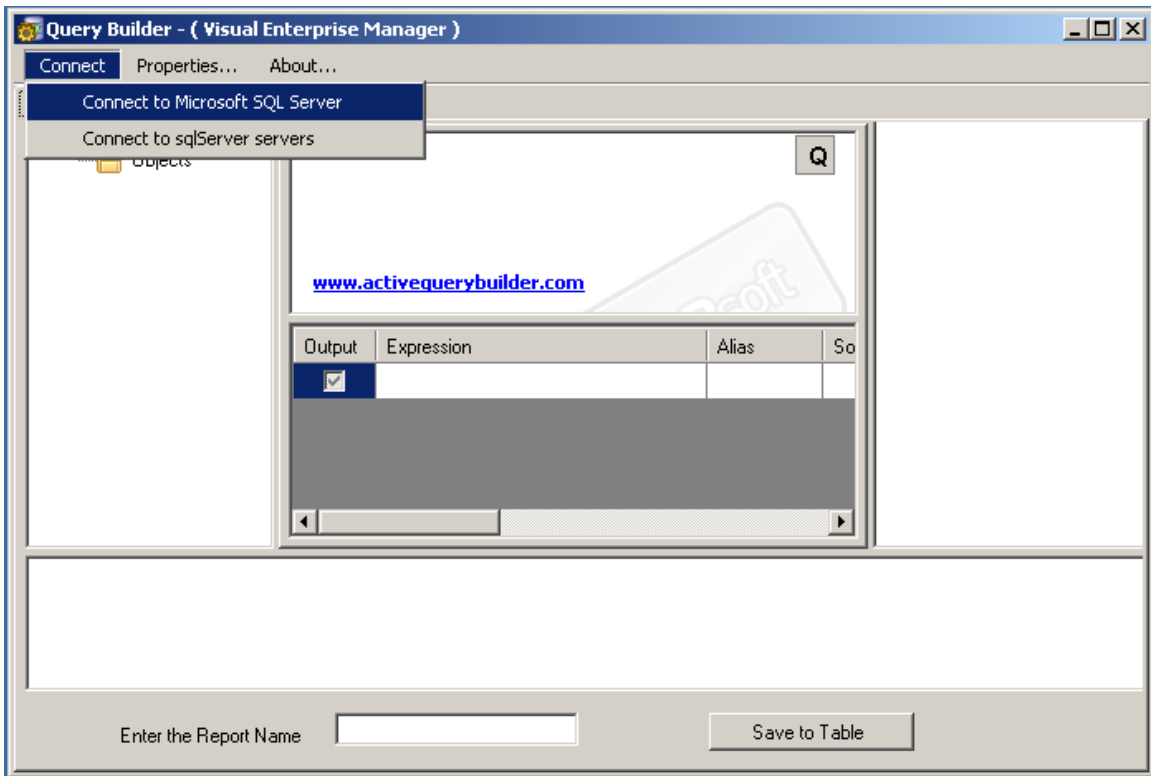
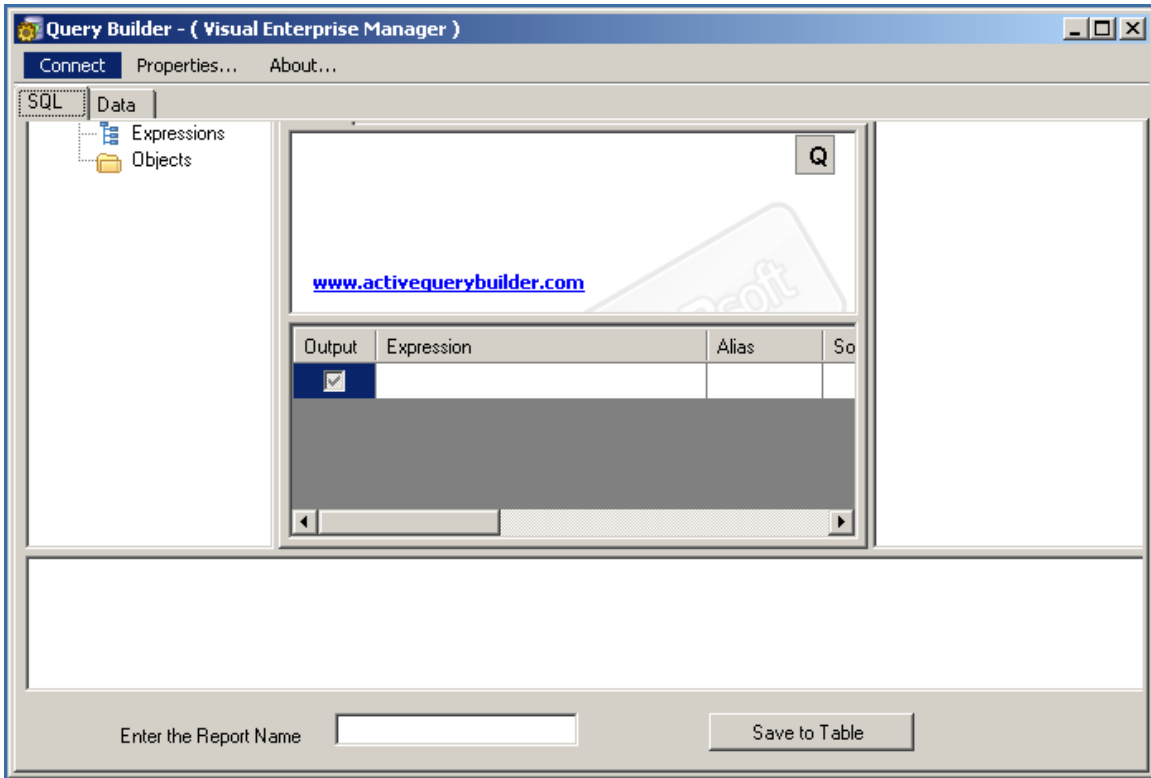


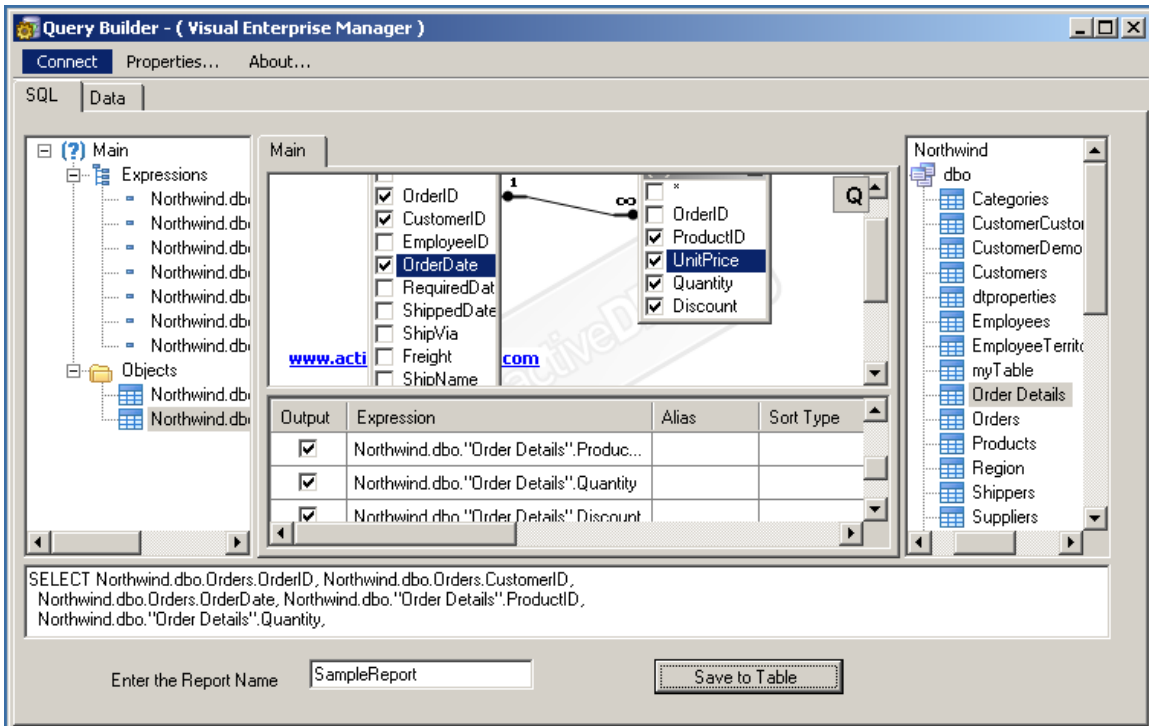
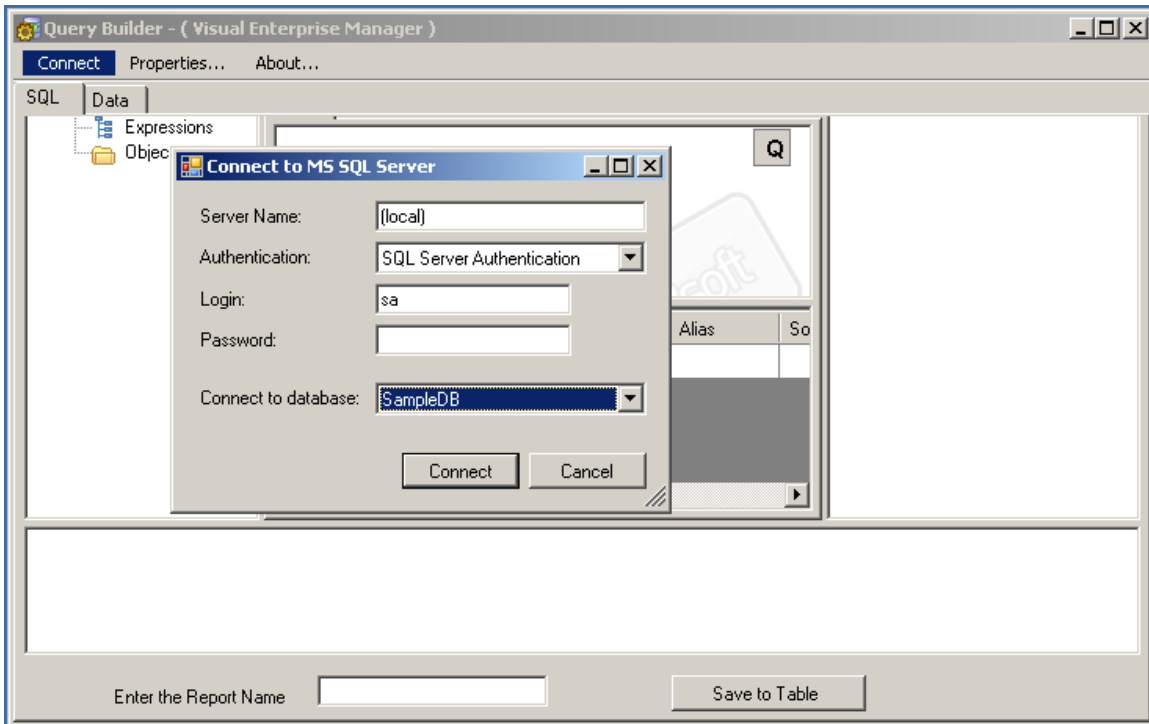
The screenshot shows the VEM Reporting Tool window displaying a report. The report title is 'Authors And Publications' in orange text. Below the title is a table with 7 columns: address, city, state, zip, title id, title, and an empty column. The table contains 4 rows of data. The window also shows a toolbar with navigation and search icons, and a status bar at the bottom.

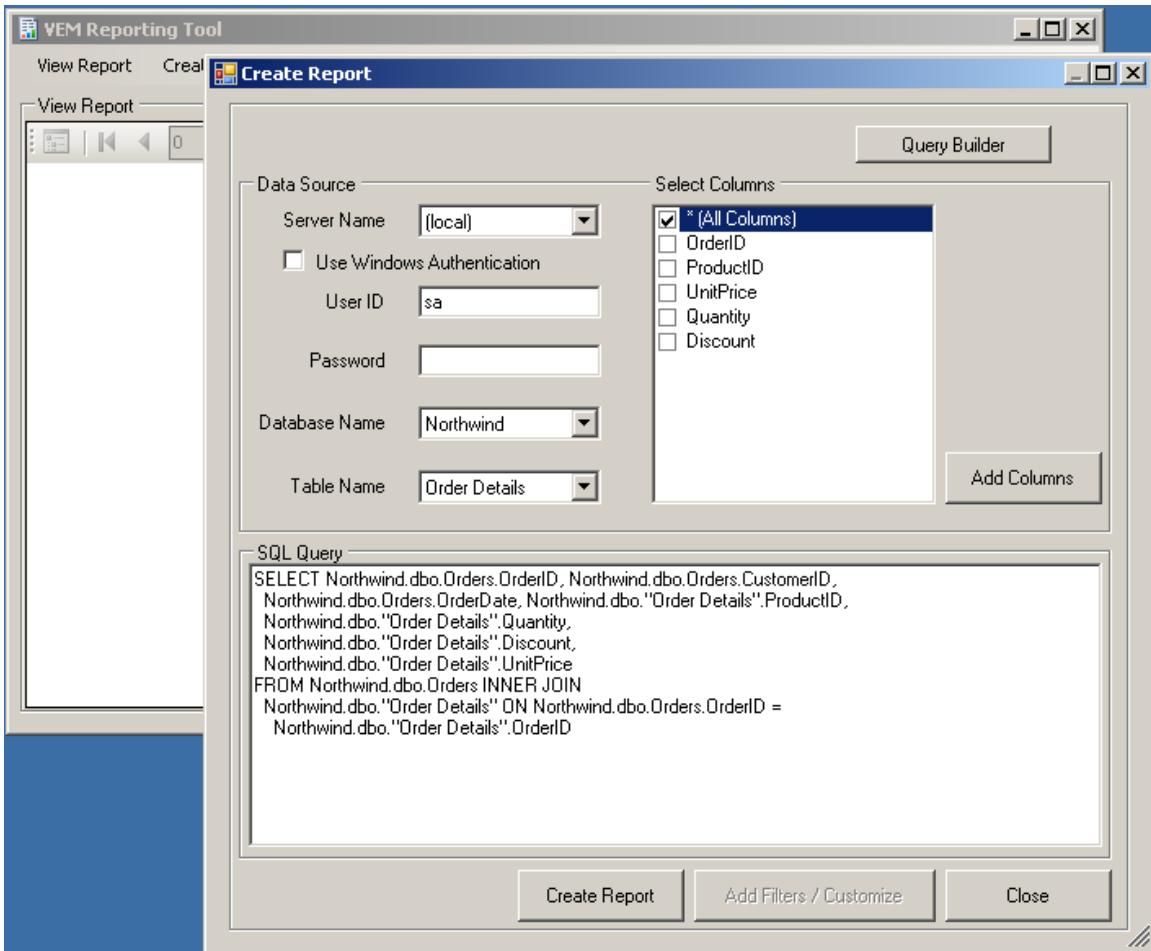
address	city	state	zip	title id	title	
309 63rd St. #411	Oakland	CA	94618	BU1032	The Busy Executive's Database Guide	
6223 Bateman St.	Berkeley	CA	94705	BU1032	The Busy Executive's Database Guide	
22 Cleveland Av. #14	San Jose	CA	95128	BU1111	Cooking with Computers: Surreptitious Balance Sheets	
44 Upland	Oakland	CA	94612	BU1111	Cooking with	

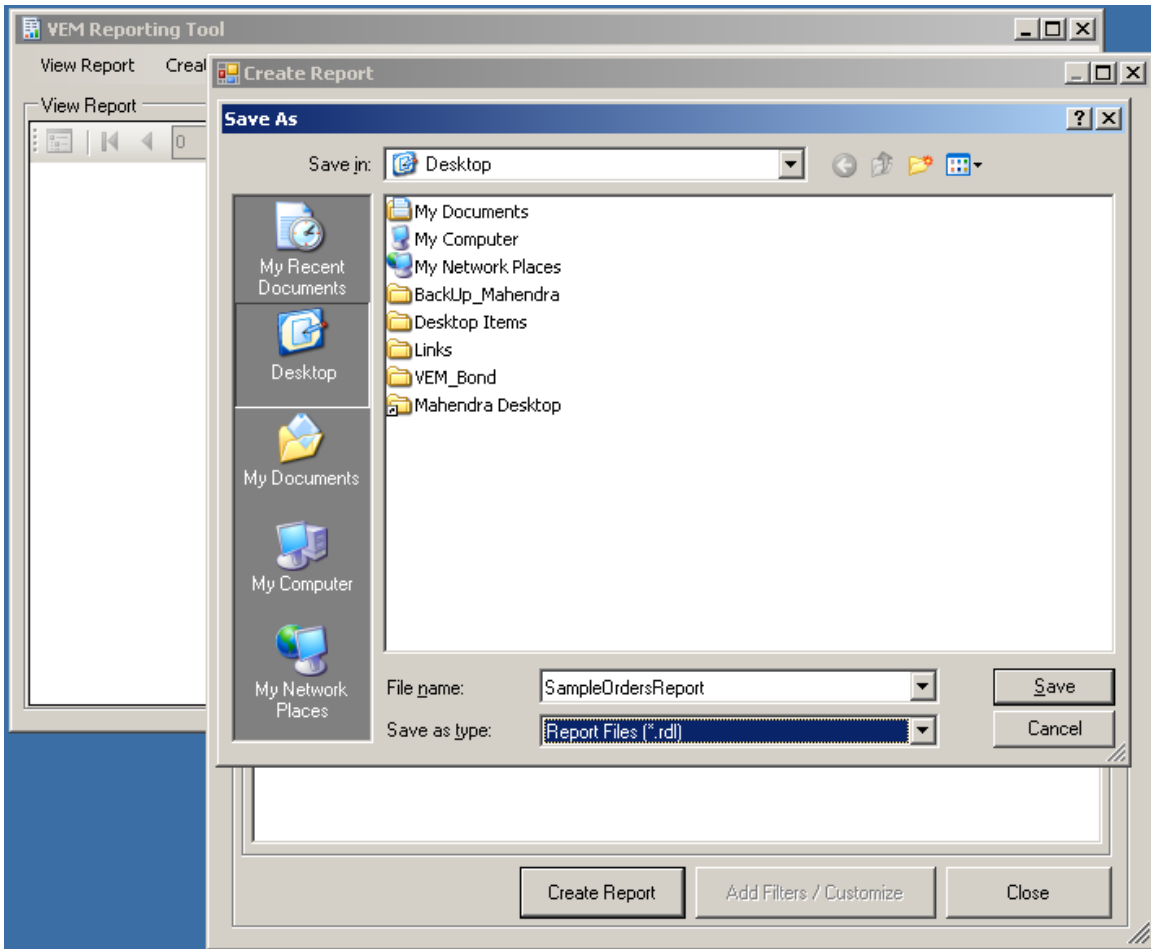












Customize Report [X]

Header / Footer

Create Page Header Header Text

Create Page Footer Footer Text

Sorting / Filtering / Grouping

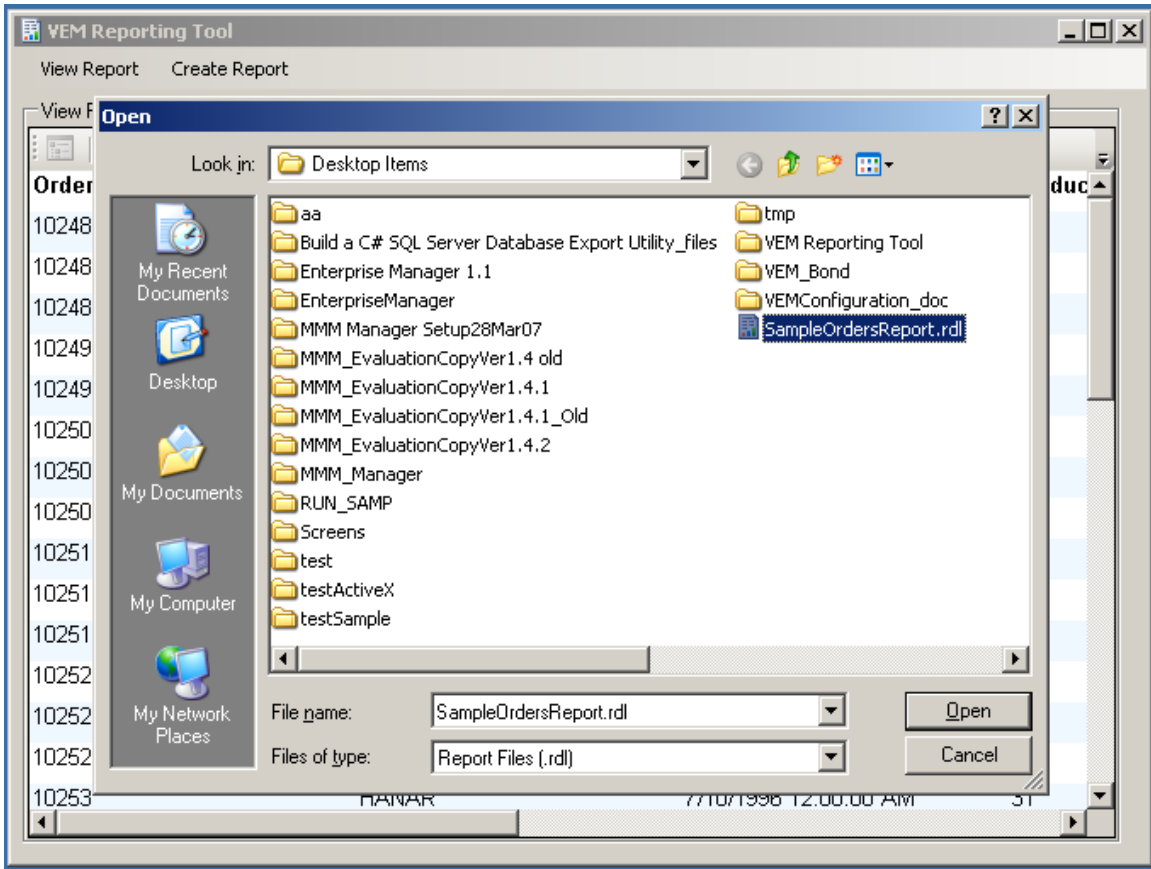
Groups | Filters | Sorting

Group on :

	Expression	Group Type
	OrderDate	Table Group
▶*		

Apply Cancel

Apply Preview Close



VEM Reporting Tool

View Report Create Report

View Report

1 of 48 100%

OrderID	CustomerID	OrderDate	Product
10248	VINET	7/4/1996 12:00:00 AM	11
10248	VINET	7/4/1996 12:00:00 AM	42
10248	VINET	7/4/1996 12:00:00 AM	72
10249	TOMSP	7/5/1996 12:00:00 AM	14
10249	TOMSP	7/5/1996 12:00:00 AM	51
10250	HANAR	7/8/1996 12:00:00 AM	41
10250	HANAR	7/8/1996 12:00:00 AM	51
10250	HANAR	7/8/1996 12:00:00 AM	65
10251	VICTE	7/8/1996 12:00:00 AM	22
10251	VICTE	7/8/1996 12:00:00 AM	57
10251	VICTE	7/8/1996 12:00:00 AM	65
10252	SUPRD	7/9/1996 12:00:00 AM	20
10252	SUPRD	7/9/1996 12:00:00 AM	33
10252	SUPRD	7/9/1996 12:00:00 AM	60
10253	HANAR	7/10/1996 12:00:00 AM	31

VEM Reporting Tool

View Report Create Report

View Report

1 of 48 100%

OrderID	CustomerID	OrderDate	Product
10248	VINET	7/4/1996 12:00:00 AM	11
10248	VINET	7/4/1996 12:00:00 AM	42
10248	VINET	7/4/1996 12:00:00 AM	72
10249	TOMSP	7/5/1996 12:00:00 AM	14
10249	TOMSP	7/5/1996 12:00:00 AM	51
10250	HANAR	7/8/1996 12:00:00 AM	41
10250	HANAR	7/8/1996 12:00:00 AM	51
10250	HANAR	7/8/1996 12:00:00 AM	65
10251	VICTE	7/8/1996 12:00:00 AM	22
10251	VICTE	7/8/1996 12:00:00 AM	57
10251	VICTE	7/8/1996 12:00:00 AM	65
10252	SUPRD	7/9/1996 12:00:00 AM	20
10252	SUPRD	7/9/1996 12:00:00 AM	33
10252	SUPRD	7/9/1996 12:00:00 AM	60
10253	HANAR	7/10/1996 12:00:00 AM	31